

Now COMET Comes To Your Doorstep To Serve You



INNOVATE TO SERVE

One stop where your search for Diesel Engine ends.



- Diesel Engines
- Pump Sets
- Rasvanti - Sugarcane Juice Extractor
- Chaff Cutter Machine
- Submersible Pump Sets



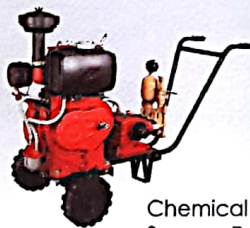
Engine Applications



Agricultural Pumpset



Thresher



Chemical Sprayer Pumpset



Concrete Mixer



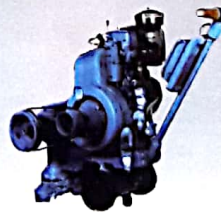
Rice Hauler



Atta Chakki



DG Set



Tiles Polish Machine



Sugarcane Crusher



In boat Marine



Winch



Anchor
Marine



Aerator



INNOVATE TO SERVE

An ISO 9001:2008 Company

ROCKET ENGINEERING CORPORATION PVT. LTD.

PLOT NO. D - 19, M.I.D.C., SHIROLI, KOLHAPUR - 416 122. (MAHARASHTRA) INDIA.

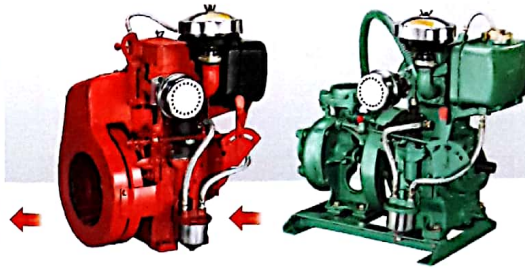
TEL. : +91 230 2468403, 2468407, 2468413. FAX : +91 230 2468731.

Email : info@rocket-comet.com • website : www.rocket-comet.com



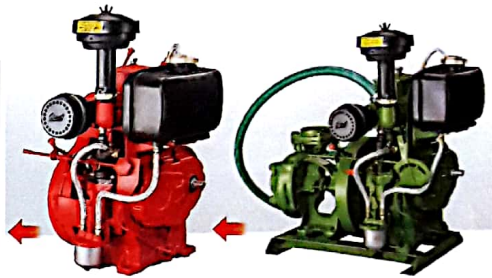
COMET CUB
SINGLE CYLINDER AIR COOLED & WATER COOLED PUMP SET

TYPE -	CUB3A	CUB4A	CUB3.5W	CUB5W
RATED POWER IN HP (kw)	3.0 (2.2)	4.0 (2.94)	3.5 (2.57)	5.0 (3.68)
RATED SPEED (RPM)	2050	2600	2050	2600
BORE X STROKE (mm)	80 X 62	80 X 62	80 X 62	80 X 62
BARE ENGINE /PUMP SET NET WEIGHT (Kg)	55	55	83	83
Maximum Torque-Kg-m (N-m)	1.01 (9.93)	1.06 (10.42)	1.18 (11.55)	1.33 (13.04)



COMET MARUTY
SINGLE CYLINDER AIR COOLED & WATER COOLED PUMP SET

TYPE -	MARUTY 3A	MARUTY 4A	MARUTY3.5W	MARUTY 5W
RATED POWER IN HP (kw)	3.0 (2.2)	4.0 (2.94)	3.5 (2.57)	5.0 (3.68)
RATED SPEED (RPM)	2050	2600	2050	2600
BORE X STROKE (mm)	80 X 62	80 X 62	80 X 62	80 X 62
BARE ENGINE /PUMP SET NET WEIGHT (Kg)	52	52	80	80
Maximum Torque-Kg-m (N-m)	1.01 (9.93)	1.06 (10.42)	1.18 (11.55)	1.33 (13.04)



COMET PORTABLE
SINGLE CYLINDER WATER COOLED PUMP SET

TYPE -	VRC3	VRC5	CPW5
RATED POWER IN HP (kw)	3.5 (2.57)	4.5 (3.3)	5.0 (3.68)
RATED SPEED (RPM)	1500	2050	2200
BORE X STROKE (mm)	76 X 76	76 X 76	76 X 76
PUMP SET NET WEIGHT (Kg)	110	110	110
Maximum Torque-Kg-m (N-m)	1.61 (15.79)	1.52 (14.89)	1.57 (15.41)



COMET COLT
SINGLE CYLINDER WATER COOLED PUMP SET

TYPE -	COLT5WC	COLT6.5WC	COLT8WC
RATED POWER IN HP (kw)	5.0 (3.68)	6.5 (4.78)	8.0 (5.89)
RATED SPEED (RPM)	1500	1800	2200
BORE X STROKE (mm)	87.5 x 80	87.5 x 80	87.5 x 80
PUMP SET NET WEIGHT (Kg)	105	105	105
Maximum Torque-Kg-m (N-m)	2.31 (22.61)	2.50 (24.47)	2.52 (24.67)



COMET MODIFIED
SINGLE CYLINDER WATER COOLED PUMP SET

TYPE -	PPW5A	PPW6.5B	PPW8C
RATED POWER IN HP (kw)	5.0 (3.68)	6.5 (4.78)	8.0 (5.89)
RATED SPEED (RPM)	1500	1800	2200
BORE X STROKE (mm)	87.5 x 80	87.5 x 80	87.5 x 80
PUMP SET NET WEIGHT (Kg)	115	115	115
Maximum Torque-Kg-m (N-m)	2.31 (22.61)	2.50 (24.47)	2.52 (24.67)

COMET PORTABLE / MODIFIED
SINGLE CYLINDER AIR COOLED DIESEL ENGINE

TYPE -	CFA3.5	PPA5A
RATED POWER IN HP (kw)	3.5 (2.57)	5.0 (3.68)
RATED SPEED (RPM)	1500	1500
BORE X STROKE (mm)	80 X 76	87.5 X 80
BARE ENGINE NET WEIGHT (Kg)	81	82
Maximum Torque-Kg-m (N-m)	1.61 (15.79)	2.31 (22.61)



COMET MODIFIED
SINGLE CYLINDER WATER COOLED PUMP SET (HIGH HEAD)

TYPE -	PPW8D
RATED POWER IN HP (kw)	8.0 (5.89)
RATED SPEED (RPM)	2600
BORE X STROKE (mm)	87.5 X 80
PUMP SET NET WEIGHT (Kg)	113
Maximum Torque-Kg-m (N-m)	2.13 (20.88)



COMET CONVENTIONAL
SINGLE AND TWIN CYLINDER WATER COOLED DIESEL ENGINES

TYPE -	VRC1	VRC4	VRC6	VRC7	VRC8/10	VRC10/12	VRC14T	VCT10	VCT13	VCT16	VCT19	VCT20	VCT24	VCT26	VCT28
RATED POWER IN HP (kw)	5.0 (3.68)	6.5 (4.78)	8.0 (5.89)	8.0 (5.89)	10.0 (7.4)	12.0 (8.83)	14.0 (10.3)	10.0 (7.4)	13.0 (9.57)	16.0 (11.8)	19.0 (13.98)	20.0 (14.7)	24.0 (17.7)	26.0 (19.13)	28.0 (20.6)
RATED SPEED (RPM)	1500	1500	1500	1600	1500	1800	1500	1500	1500	1500	1800	1500	1800	1500	1800
BORE X STROKE (mm)	80X110	85X110	95X116	87.5/110	102X116	102X116	114.3X120	80 X110	85 X110	95 X116	95 X116	102X116	102X116	114.3X120	114.3X120
BARE ENGINE NET WEIGHT (Kg)	145	145	155	150	160	170	182	260	260	270	270	275	275	290	290
Maximum Torque-Kg-m (N-m)	2.31 (22.61)	2.99 (29.37)	3.68 (36.12)	3.45 (33.87)	4.61 (45.22)	4.61 (45.22)	6.45 (63.30)	4.61 (45.22)	5.99 (18.73)	7.38 (72.34)	7.30 (71.59)	9.22 (90.43)	9.22 (90.43)	11.99 (117.56)	10.74 (105.36)



**COMET CONVENTIONAL
SINGLE AND TWIN CYLINDER
AIR COOLED DIESEL ENGINES**

TYPE -	VAC5	VAC6.5	VAC7.5	VAC8	VAC10A/T	VAC12	VAC13	VAC16	VAC20	VAC24
RATED POWER IN HP (kw)	5.0 (3.68)	6.5 (4.78)	7.5 (5.5)	8.0 (5.89)	10.0 (7.4)	12.0 (8.83)	13.0 (9.57)	16.0 (11.8)	20.0 (14.7)	24.0 (17.7)
RATED SPEED (RPM)	1500	1500	1800	1500	1500	1500	1500	1500	1500	1500
BORE X STROKE (mm)	80X110	87.5X110	87.5X110	95X116	102X116	114.3X120	87.5X116	95X116	102X116	114.3X120
BARE ENGINE NET WEIGHT (Kg)	155	160	165	170	185	192	265	270	285	290
Maximum Torque-Kg-m (N-m)	2.31 (22.61)	2.99 (29.37)	2.88 (28.26)	3.68 (36.12)	4.61 (45.22)	5.53 (54.26)	5.99 (58.73)	7.38 (72.34)	9.22 (90.43)	11.06 (108.50)

**COMET CONVENTIONAL
SINGLE AND TWIN CYLINDER WATER COOLED DIESEL ENGINES ELECTRIC START**

TYPE -	VRC1	VRC4	VRC6	VRC8	VRC10	VRC14	VCT13	VCT16	VCT19	VCT20	VCT24	VCT26	VCT28
RATED POWER IN HP (kw)	5.0 (3.68)	6.5 (4.78)	8.0 (5.89)	10.0 (7.4)	12.0 (8.83)	14.0 (10.3)	13.0 (9.57)	16.0 (11.8)	19.0 (13.98)	20.0 (14.7)	24.0 (17.7)	26.0 (19.13)	28.0 (20.6)
RATED SPEED (RPM)	1500	1500	1500	1500	1800	1500	1500	1500	1800	1500	1800	1500	1800
BORE X STROKE (mm)	80x110	85x110	95x116	102x116	102x116	114.3x120	85x110	95x116	95x116	102x116	102x116	114.3x120	114.3x120
BARE ENGINE NET WEIGHT (Kg)	205	205	210	217	217	227	315	315	315	320	320	330	330
Maximum Torque-Kg-m (N-m)	2.31 (22.61)	2.99 (29.37)	3.68 (36.12)	4.61 (45.22)	4.61 (45.22)	6.45 (63.30)	5.99 (58.73)	7.38 (72.34)	7.30 (71.59)	9.22 (90.43)	9.22 (90.43)	11.99 (117.56)	10.74 (105.34)

**COMET CONVENTIONAL
SINGLE AND TWIN CYLINDER AIR COOLED DIESEL ENGINES ELECTRIC START**

TYPE -	VAC5	VAC6.5	VAC8	VAC10A	VAC12	VAC13	VAC16	VAC20	VAC24
RATED POWER IN HP (kw)	5.0 (3.68)	6.5 (4.78)	8.0 (5.89)	10.0 (7.4)	12.0 (8.83)	13.0 (9.57)	16.0 (11.8)	20.0 (14.7)	24.0 (17.7)
RATED SPEED (RPM)	1500	1500	1500	1500	1500	1500	1500	1500	1500
BORE X STROKE (mm)	80x110	87.5x110	95x116	102x116	114.3x120	87.5x116	95x116	102x116	114.3x120
BARE ENGINE NET WEIGHT (Kg)	210	210	220	225	235	310	310	320	325
Maximum Torque-Kg-m (N-m)	2.31 (22.61)	2.99 (29.37)	3.68 (36.12)	4.61 (45.22)	5.53 (54.26)	5.99 (58.73)	7.38 (72.34)	9.22 (90.43)	11.06 (108.50)

WATER PUMP DETAILS

Sr.No.	PUMP MODEL	SIZE (mm)	CENTER HEIGHT (mm)	SEAL TYPE	RPM	PRIME MOVER HP/KW	HEAD RANGE (M)	DUTY POINT HEAD (M)	DUTY POINT DISCHARGE (LPS)
1.	TS2+A	65 x 50	140	GT	2050	3.5/2.6	10.4 - 14.3	13	7
2.	TCM4D	100 x 100	140	MS	2050	3.5/2.6	8.0 - 11.0	10	16
3.	TCM3+B	80 x 65	140	GT	2600	4/2.9	12 - 16.5	15	12
4.	*TSP2	50 x 50	140	MS	2600	4/2.9	10.4 - 14.3	13	5.5
5.	*TSP2	50 x 50	140	OS	2900	4/2.9	16.0 - 24.0	20	5
6.	TS3+A	80 x 65	140	GT	2600	5/3.7	17.6 - 24.5	22	10
7.	TST33	80 x 80	140	GT	2600	5/3.7	9.6 - 13.5	12	12
8.	TCM3B	80 x 80	140	MS	2600	5/3.7	12.8 - 17.6	16	14
9.	TCM4B	100 x 100	140	MS	2600	5/3.7	10.4 - 14.3	13	17
10.	TC2+	65 x 50	150	GT	1500	3.5/2.6	9.5 - 12.8	11	9.5
11.	TC3+	80 x 65	150	GT	2200	5/3.7	15.2 - 20.9	19	12
12.	TDCV3+A	80 x 65	170	GT	1500	5/3.7	12.0 - 18.0	15	16
13.	TCM3A	80 x 80	170	MS	1500	5/3.7	8.8 - 12.1	11	15
14.	TDCV4	100 x 100	170	GT	1500	5/3.7	6.0 - 14.0	12	16
15.	TCM4A	100 x 100	170	MS	1500	5/3.7	8.0 - 11.0	10	21
16.	TCM4A	100 x 100	170	OS	1500	5/3.7	6.4 - 8.8	8	18
17.	BF5DC	80 x 65	170	MS	1500	5/3.7	12.8 - 17.6	16	14
18.	BFDCV3	80 x 80	170	MS	1500	5/3.7	8.8 - 12.1	11	15
19.	TDCV3	75 x 75	170	GT	1500	6.5/4.8	13.15 - 16.30	15.5	17
20.	TDCV3+E	80 x 65	170	GT	1800	6.5/4.8	12.0 - 19.8	18	14
21.	TCM4	100 x 100	170	OS	1800	6.5/4.8	9.6 - 13.2	12	21
22.	TDCV3+H	80 x 65	170	GT	2200	8/5.9	21.6 - 30	27	15
23.	TCM4H	100 x 100	170	MS	2200	8/5.9	13.6 - 18.7	17	22
24.	TCM4	100 x 100	170	OS	2200	8/5.9	13.6 - 18.7	17	22
25.	TCM2+HA	65 x 50	170	MS	2600	8/5.9	32.8 - 45	41	7
26.	TDCV3+A	80 x 65	203	GT	1500	5/3.7	12.0 - 18.0	15	16
27.	TDCV3	75 x 75	203	GT	1500	6.5/4.8	13.15 - 16.30	15.5	17
28.	TDCV4	100 x 100	203	GT	1500	6.5/4.8	10.2 - 12.6	12	18
29.	TCM4	100 x 100	203	OS	1500	6.5/4.8	10.2 - 12.6	12	18
30.	TDCS4	100 x 100	203	GT	1500	8/5.9	12.2 - 15.4	14	20
31.	TDSSH3+	80 x 65	203	GT	1500	10/7.4	18.0 - 32.0	28	16.4

* Sewage / Mud Pump

GT - Gland Type

MS - Mechanical Seal

OS - Oil Seal



RASVANTI - SUGARCANE JUICE EXTRACTOR

HP		Consumption of Fuel (Engine)	Capacity of Fuel Tank	Juice of Sugarcane (Per Hr.)
Engine	Motor			
3.0	2.0 - Single Phase	300 ml. per Hour	4 Liters (Run 12-13 Hours)	70 to 75 Liters *

* Juice extraction depends upon quality & age of sugarcane.



COMET CHAFF CUTTER MACHINE

MODEL	KRC-1	KRC-4	KRC-5
Blade speed(RPM)	288	360	360
Cutting blade material	High carbon steel	High carbon steel	High carbon steel
No. of blades	04 (Both sides sharpened)	02 (Both sides sharpened)	02 (Both sides sharpened)
Blade size(mm)	115 X 60 X 8	280 X 60 X 8	280 X 60 X 8
Capacity/hr.*	700-1000 kg	1200-1300 kg.	Above 2000 kg.
Electric motor (HP)	2- Single Phase	3 - Single or Three Phase	5 Three Phase
Engine	3/3.5 HP Air cooled	5 HP Air cooled	6.5 HP Air cooled
Overall Dimensions(LxWxH) (mm)	1100 x 584 x 980	1550 X 610 X 1200	1550 X 610 X 1200

*Capacity(output) depends upon fodder condition. **Total Chaff cutter is mounted on Fab.MS structure.



COMET SUBMERSIBLE PUMP SETS

Power range H.P./ kW	Single phase 0.35 hp to 2.0 HP. / 0.26 kW – 1.5kW Three Phase .05 HP to 5.0 HP / 0.37kW – 3.7 kW
Speed	2850 RPM
Verson	Single Phase -180 – 240V, Three Phase -350 – 415V, 50 Hz, A.C. Supply
Maximum total head	250 meter (25.0 bar)
Maximum flow rate	160 LPM .
Maximum outer diameter in mm	DIA. 96 MM.
Nominal outlet size in inches	1, 1 ¼ & 1 ½ BSP.
Maximum starts per hour	12 times.
Type of duty	S1 (continuous)
Direction of rotation	Anti clock wise viewing from top.

As continuous improvements are contemplated the illustrations & descriptions are not binding.